



Advent & Christmas at



Leicester  
Cathedral

---

# What's On

December 2024  
– February 2025





# Welcome

In this last year I have enjoyed some memorable moments in the outdoors, in galleries, and in this Cathedral. Each in their own way have brought an expansiveness of heart, and alternative perspective, and something of the beauty of God. But the most wonderful experience for me was holding a tiny three-month-old baby girl in my arms in a busy café. Holding her brought a stillness of heart, a rush of love, and a glimpse of hope and the future.

In the 'café' busyness of this season, here at the Cathedral we are offering you a variety of concerts, music, and services to help you celebrate Christmas with your friends and loved ones, and events and activities into the New Year.

In all that we offer in this beautiful space, our cathedral for everyone, my prayer is that you will experience something of the stillness, hope, and love that is in God, in the Christ Child, and the gift each one of us can hold.

**The Very Revd Karen Rooms**  
Dean of Leicester



Admission to the Cathedral is by a suggested voluntary donation of **£5 per adult**

*Some events and activities have a separate charge*





---

## Visiting hours

### **Monday–Friday**

9.00am–5.00pm

### **Saturday**

10.00am–5.00pm

### **Sunday**

12.00–3.00pm

*Occasionally there are special services or events which may affect our opening hours.*

*The Tomb of Richard III can be visited between 10.30am–4.30pm from Monday to Saturday, and 12.00–3.00pm on Sundays.*

**See page 12 for New Year opening times.**

---

## Daily services

### **Monday**

8.30am Morning Eucharist

5.30pm Evening Prayer/  
Choral Evensong\*

### **Tuesday–Friday**

8.30am Morning Prayer

12.30pm Lunchtime Eucharist

5.30pm Evening Prayer/  
Choral Evensong\*

### **Saturday**

9.30am Morning Prayer

5.30pm Evening Prayer

### **Sunday**

10.30am Cathedral Eucharist

3.30pm Evening Prayer/  
Choral Evensong\*

*Subject to change.*

*\*Choral Evensong takes place during term-time.*



# Special Services

---

Sunday 1 December | 4.30pm

## **Advent Carol Service**

A service of readings and music marking the start of Advent.

Thursday 5 December | 5.30pm

## **Carol Service for the Courts**

A traditional carol service with readings and carols with the Cathedral Choir and the Leicester Legal Choir. Attended by representatives of the Legal and Justice Service in Leicester and Leicestershire.

Sunday 8 December | 3.30pm

## **Global Carol Service**

Bringing intercultural worshipping communities together to share music and readings celebrating Christmas from different traditions from around the world. With music from Leicester Cathedral Choir, the Church of the Martyrs, All Saints Loughborough, St Paul's Oadby, and All Saints' Belgrave.

Saturday 14 December | 3.00pm

## **Christingle Service**

An interactive family service in aid of The Children's Society. Create your own Christingle and learn about its meaning, share the Christmas story, and sing some carols!

Sunday 15 December | 3.30pm

## **Carol Service attended by the Freemasons**

A traditional service of readings and carols with music from the Cathedral Choir, attended by the Freemasons of Leicester and Leicestershire.



*Join us for the annual Christingle Service!*





Sunday 22 December | 4.30pm

Monday 23 December | 6.00pm

### **The Cathedral Carol Service**

A traditional service of readings and carols with music by the Cathedral Choir.

Sunday Preacher: Bishop of Loughborough.

Monday Preacher: Bishop of Leicester.

## **Christmas Eve** Tuesday 24 December

**The Crib Service** | 3.00pm

A family friendly service telling the Christmas story with carols and music by the Cathedral Choir. Come and help build the Cathedral Crib as we enter the mystery and joy of Christmas together.

**Midnight Mass** | 11.30pm

Come and celebrate the beginning of Christmas, welcoming the Christ Child with music from the Cathedral Choir, incense, and candlelight. Led by the Bishop of Loughborough. Preacher: Dean of Leicester.

## **Christmas Day** Wednesday 25 December

**Christmas Day Eucharist** | 10.30am

Our Christmas service for all the family to celebrate on Christmas Day. With music from the Cathedral Choir and incense. Preacher: Bishop of Leicester.

Sunday 5 January 2025 | 10.30am

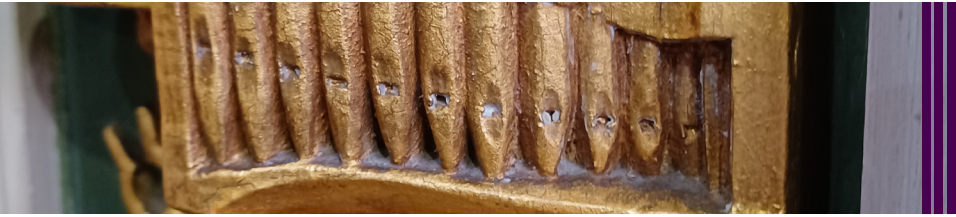
**Epiphany Eucharist**

Celebrating Epiphany and the arrival of the Magi. With incense.

Sunday 2 February | 10.30am

**Candlemas Eucharist**

Celebrating the feast of Candlemas and the light of Jesus Christ coming into all the world.



# Music & Events

---

Thursday 5 December | 6.30–9.00pm

## **Late Night Opening!**

'Tis the season for a late opening event at the Cathedral... Amidst the hectic build up to Christmas, take some time out of your busy schedule to visit the Cathedral after hours and enjoy a moment of peace.

We will have free Christmas craft activities, festive refreshments to purchase, and carols sung by the **Coro Nostro Chamber Choir** from 7.30–8.30pm.

The event is free to attend and a relaxed, drop-in format.

## *Advent Meditations*

Seasonal meditations with organ music, Bible readings, and poetry. All at 12.30pm. Admission free, with donations encouraged.

### **Monday 2 December**

Organist: Simon Headley

### **Monday 9 December**

Organist: Christopher Ouvry-Johns

### **Monday 16 December**

Organist: Rosie Vinter

### **Monday 23 December**

Organist: David Cowen





Friday 6 December | 7.30pm (doors 7.00pm)

### **Mediæval Bæbes**

Established as one of the most successful female-led, early music and folk ensembles in Europe; lush, ethereal harmonies will transport the listener through a myriad of ancient and forgotten languages.

Tickets from £13–28.50 available from [www.mediaevalbaebes.com/live](http://www.mediaevalbaebes.com/live)

Saturday 7 December | 6.30pm (doors 6.15pm)

### **Christmas Concert with Leicester Symphony Orchestra and Leicester Cathedral Choir**

Join Leicester Cathedral Choir and Leicester Symphony Orchestra for an evening of festive music, including excerpts from Tchaikovsky's *The Nutcracker Suite*, sleigh rides, and audience carols.

Conducted by Chris Ouvry-Johns and Dexter Drown.

Tickets from £6–10 available from [www.leicestersymphonyorchestra.co.uk](http://www.leicestersymphonyorchestra.co.uk)

Thursday 12 December

6.30pm (doors 6.15pm) & 8.30pm (doors 8.15pm)

### **Kinda Dusty: Christmas by Candlelight**

A West End cast and live band perform your favourite Christmas hits as you have never heard them before.

Tickets from £10–40.00 available from [boxoffice.concertsbycandlelight.com](http://boxoffice.concertsbycandlelight.com)

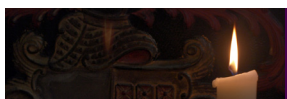
Wednesday 18 December | 7.15pm (doors 7.00pm)

### **LOROS Christmas Concert**

Join LOROS as we celebrate the magic of the season with 80 talented singers from four choirs conducted by Simon Lubkowski.

Including Knighton Community Choir, Lux Acapella, Ratcliffe Chorale, and The Pantones (Leicester LGBT Centre Choir).

Tickets from £15–20 available from [www.loros.co.uk/christmasconcert](http://www.loros.co.uk/christmasconcert)



**See page 10 for Leicester Cathedral Choir's Carol Concerts by Candlelight!**

# Lunchtime Recitals

## Spring Season 2025

**12.30pm | Free admission,  
donations encouraged**

Monday 27 January

**Alexander Berry** Organ

Director of Music, Great St Mary's, Cambridge

Monday 10 February

**Grupo Bossa**

featuring **Carmelia Marques** singing  
Bossa Nova in Portuguese and traditional  
Portuguese folk songs

Monday 24 February

**Christopher White** Violin

**Melanie Reinhard** Piano



Friday 14 February 2025 | 7.30pm (doors 6.45pm)

### **Valentine's Moonlight Sonata by Candlelight**

Treat yourself and your loved ones to a Valentine's piano recital in the beautiful candlelit setting of Leicester Cathedral.

Renowned concert pianist, Caroline Tyler, will perform a selection of classical and romantic piano works in a concert to remember!

With music by Beethoven, Scarlatti, Mozart, Schubert, and more.

Tickets from £19 available from  
[www.ticketsource.co.uk](http://www.ticketsource.co.uk)







# LEICESTER COMEDY FESTIVAL

Wednesday 5 February 2025 | 7.00pm  
(doors 6.30pm)

## **The Bible: The Greatest Story Trevor Told**

Paul Kerensa has co-written sitcoms *Not Going Out* and *Miranda*, and religiously broadcasts Radio 2's *Pause for Thought* and Radio 4's *Daily Service*.

His mate Trevor has read this good book. Greatest story ever told. Via pub jokes, tales and jukebox singalongs, he'll turn it into standup - from God calling it a day to a bit of a revelation, plus your favourite biblical gameshow, *Catchphrases*.

Tickets from £8 available from [www.comedy-festival.co.uk/tickets](http://www.comedy-festival.co.uk/tickets)

Saturday 8 February 2025 | 7.30pm (doors 7.00pm)

## **Milton Jones**

The award-winning comedian whose shirt style reflects his comic style, eclectic and surreal. You may know him from *Mock the Week*, *Live at the Apollo* and, for one night only, he will be taking a break from his jam-packed tour *Ha! Milton* to bring his unique humour to Leicester Cathedral.

Chris Stokes, who has recently supported Milton on his UK tour *Milton Jones is Out There* and his previous tour *Milton Jones and the Temple of Daft*, will be supporting him again for this performance. 16+

Tickets from £15 available from  
[www.comedy-festival.co.uk/tickets](http://www.comedy-festival.co.uk/tickets)



Sunday 25 February 2025 | 8.00pm (doors 7.45pm)

## **Leicester Comedy Festival Closing Gala**

The Festival is almost over... Join us for a spectacular finale at Leicester Cathedral, with some of the best comedians on the circuit.

Tickets from £12 available from [www.comedy-festival.co.uk](http://www.comedy-festival.co.uk)

# Carol Concerts *by* Candlelight

Get into the festive spirit with concerts  
sung by Leicester Cathedral Choir

**Tuesday 17 December** and  
**Thursday 19 December** at **7.30pm**

Join us for two special concerts of Christmas carols and music sung by the Cathedral Choir, surrounded by real candlelight in the final resting place of King Richard III.

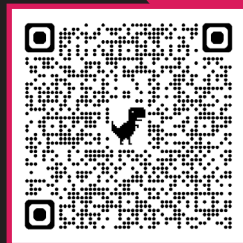
Tickets include a mince pie and festive drink.

Concessions available for children aged 3–16, those in full-time education, and ages 65+.

Early booking is advised.

## **Tickets**

£12.00 | £10.00 (concessions)  
Available from [Eventbrite.co.uk](https://www.eventbrite.co.uk)



Book  
now!





---

# Christmas & New Year Opening Times

## **Wednesday 25 December**

Building closes after the  
10.30am Christmas Eucharist

## **Thursday 26 December**

Closed

## **Fri 27 / Sat 28 December**

10.30am–3.30pm

## **Sunday 29 December**

12.00–3.00pm

## **Mon 30 / Tue 31 December**

10.30am–3.30pm

## **Wednesday 1 January 2025**

Closed

## **Thursday 2 January**

Normal opening times and  
services





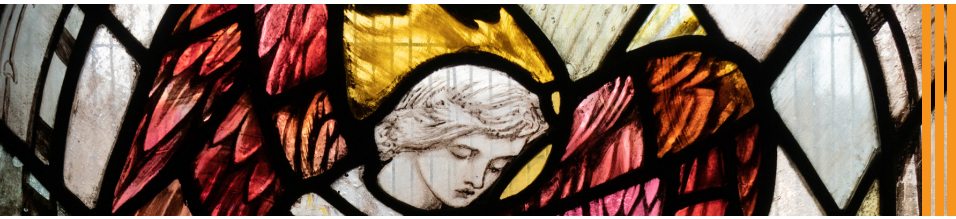
## 2025 marks the 10th anniversary of the Reinterment of King Richard III at Leicester Cathedral

To mark this significant moment in history, get ready to join us for a spectacular three week programme of services, events, and activities in March.

From talks and music to art installations, afternoon teas to medieval banquets, there's something for everyone as we remember, reflect, and celebrate this historic occasion.

Be the first to find out full details by joining our mailing list via our website  
[leicestercathedral.org/  
richard-iii-anniversary](http://leicestercathedral.org/richard-iii-anniversary)





# Discipleship

---

Thursdays 12 December, 16 January, 13 February | 7.00pm

## Cathedral Book Club

Our Cathedral Book Club meets online on Zoom once a month. This season, we will be reading:

- December – *Do Not Be Afraid: The Joy of Waiting in a Time of Fear (The Archbishop of York's Advent Book 2024)* by Rachel Mann
- January – *On Voice: Speech, Song and Silence, Human and Divine* by Victoria Johnson.

Join us to help choose what we will read in future sessions. New members are always welcome – please email [Jude.Taylor@LeicesterCofE.org](mailto:Jude.Taylor@LeicesterCofE.org).

Tuesdays 21, 28 January, 4, 11 February

In person, St George's Chapel, 1.30pm | Online, Zoom, 7.00pm

## Bible Together: John

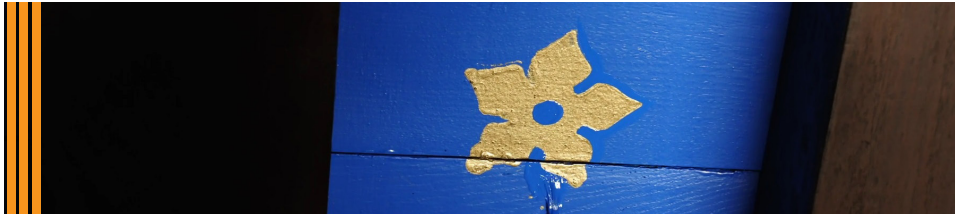
In this short course, we will journey through passages from John's Gospel, reading, listening, and wondering together. We will also try out spiritual practices which may inspire and guide us in our own Bible study outside of the course.

'Bible Together' draws on our 'Questions Together' model, rooted in our approach to discipleship here at Leicester Cathedral, which is centred around storytelling, conversation, and wondering about God together.

Please visit our [Eventbrite](#) page to book your free place, or contact [Jude.Taylor@LeicesterCofE.org](mailto:Jude.Taylor@LeicesterCofE.org) if you have any questions.

*St John and Prochorus depicted in Xoranasat's gospel manuscript. Armenian, 1224.*





Saturday 4 January | 10.30am–12.30pm

### **Journeys of Faith – a Quiet Morning for Epiphany**

At Epiphany, we remember how the three wise men, following the star, went on a great journey in search of Christ.

Join us for a morning of reflection on our own journeys of faith at the start of this new year. How might we seek out Jesus in our everyday lives afresh this year and what will this mean for our discipleship?

Register via **Eventbrite**.

## ■ ■ ■ *Exploring Faith?*

Are you interested in journeying with others who would also like to know more about faith, discipleship, and church?

You are very welcome – especially if you are new to church – to contact [Jude.Taylor@LeicesterCofE.org](mailto:Jude.Taylor@LeicesterCofE.org) to register interest.

---

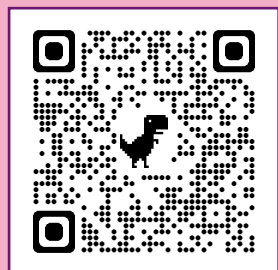
## Sign up to our Newsletter

Keep up to date with news from Leicester Cathedral with our weekly newsletter *Cathedral in Touch*.

To subscribe, scan the QR code or email [Cathedral@LeicesterCofE.org](mailto:Cathedral@LeicesterCofE.org)

*The newsletter is emailed out to subscribers via Mailerlite. If you do not see it in your inbox, please check your spam/junk inboxes or filters.*

■ ■ ■ **Scan here!**





# Tours

*Tours are subject to change so please check our website for up-to-date information.*

---

## **Richard III Tours**

Join us on a fascinating tour as our expert guides showcase the beautifully crafted tomb, the magnificent Tom Denny Redemption Windows, and the stunning funeral pall.

Tuesdays and Wednesdays at 11.30am | Fridays at 2.30pm  
Saturdays at 11.30am and 2.30pm

£4.00 per person. Accompanied children under 16 free. Tours last about 40 minutes and can be booked via Eventbrite or at the Welcome Desk.

---

## **Themed highlight tours**

*All tours start at 11.30am and are £4.00 per person. Accompanied children under 16 free. Tours last about 30 minutes and can be booked via Eventbrite or at the Welcome Desk.*

### **Cathedral Windows** First Thursday of the month

Explore the beautiful windows of Leicester Cathedral in this illuminating windows tour. Find out more about the magnificent Great East window, the fabulous Richard III Redemption windows, the exquisite John Sarson memorial window and our James Thompson memorial window.

### **Evolution of Medicine** Second Thursday of the month

Join us on an absorbing exploration of the evolution of medicine from the middle-ages to the Victorian era and its connections to the parish of St Martin.

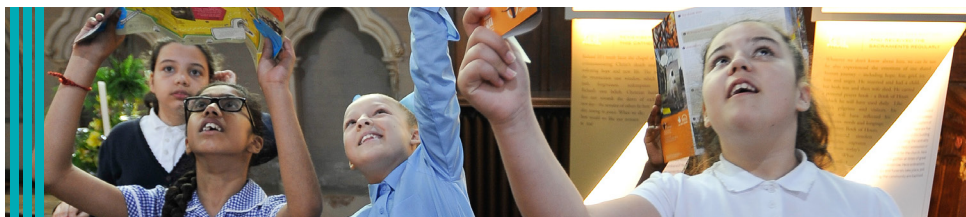
### **Prayer and Pilgrimage** Third Thursday of the month

Did you know that St Martin's church was on a pilgrimage trail in medieval times? Our enticing tour journeys back in time for an exploration of the act of pilgrimage and its evolution over time.

### **Carved in Stone** Fourth Thursday of the month

Stone has many uses in our heritage buildings. Often grand and imposing but sometimes delicate and exquisite. Join us on our fascinating tour which takes us on an exploration of the stone in our beautiful Cathedral.





# Children & Families

---

Saturday 14 December | 1.00–3.00pm

## Christmas Craft

Join us for FREE Christmas craft making activities. No need to book – just drop in. All children need to be accompanied by an adult. From Ages 3+ Stay with us for the **Christingle Service** (see page 4)!

Tuesday 18 February | 1.30–3.30pm

Thursday 20 February | 10.00am–12.00pm

## February Half-term Craft Activities

Join us for FREE half term craft activities. No need to book – just drop in. A play area will be available for babies and toddlers. All children need to be accompanied by an adult.

# School Visits

---

## EYFS – KS5

We welcome school visits from all faiths and denominations and our newly renovated Cathedral is fully accessible. Our brand-new learning programme is packed with topics covering Christianity, Richard III, art, music, and much more!

Our sessions can be adapted to meet SEND requirements and our workshops follow the National Curriculum and the Leicestershire Agreed Syllabus for RE.

For information about our workshops and school visits, please contact us via [Cathedral.Education@LeicesterCofE.org](mailto:Cathedral.Education@LeicesterCofE.org) – more details can be found on our website.

**Please note: all school visits need to be pre-booked.**

Saturday 15 February 2025 | 10.00am–3.00pm

## Volunteer Recruitment Open Day

Come to our drop-in day and find out about the range of volunteer roles available in the our beautiful building and community. Minimum age of 16.



## Venue Hire

From Roman archaeological discoveries to the reinterment of Richard III, Leicester Cathedral is steeped in history.

Our restoration project has revitalised the building as we approach our centenary year in 2027. Having pushed boundaries over the last century as the first cathedral to have a Girl's Choir, a female Dean, and an all-female clergy team, we are committed to continuing our story of inclusion and accessibility.

The Cathedral is in the heart of the UK's first non-white majority city, and we strive to reflect this in our programme and welcome. We are a historical attraction, a performance

### Have you considered hosting your event or exhibition in the Cathedral?

venue, an exhibition space, and a working church. We are a reassuring resource for our local community alongside being a professional venue that delivers a high-quality visitor experience for people from across the world.

Our spaces available for hire are as multi-faceted as the Cathedral itself. Our dedicated team will work with the hirer to utilise the space according to your needs.

If you would like bring the creative vision for your event to life in our historic building then please do get in touch via the booking form on our website.

---

# Supporting your Cathedral

## **Volunteering**

We have a wide range of roles including assisting visitors, flower arranging, bellringing, to helping with our services.

To find out more please email [Rebecca.Hale@LeicesterCofE.org](mailto:Rebecca.Hale@LeicesterCofE.org) or call 0116 261 5368.

## **Join a Guild**

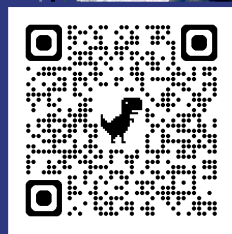
The Guild of St Martin supports our services and our outreach work, and The Guild of St Katharine supports our choirs and music in the Cathedral.

Find out about the benefits of becoming a member by emailing [David.Pepworth@LeicesterCofE.org](mailto:David.Pepworth@LeicesterCofE.org) or calling 0116 261 5344.

## **Donate regularly**

Your regular support however small or large helps us best plan ahead and best serve the city and county.

Email [David.Pepworth@LeicesterCofE.org](mailto:David.Pepworth@LeicesterCofE.org), call 0116 261 5344, or scan the QR code to find out the options to give regularly.





Leicester Cathedral Revealed  
has been made possible with  
The National Lottery Heritage  
Fund. Thanks to National Lottery  
players, we have been able to  
restore the Cathedral building,  
develop our events and activities  
programme, and reaffirm the  
Cathedral's place at the centre  
of the City and County.



*Stained glass window images and  
cinquefoil ceiling detail*  
© Alex J Wright

*Cathedral Font and Christmas Tree*  
© Ranjit Singh Chaggar

0116 261 5389  
[www.leicestercathedral.org](http://www.leicestercathedral.org)  
[Cathedral@LeicesterCofE.org](mailto:Cathedral@LeicesterCofE.org)

Leicester Cathedral,  
St Martins House,  
7 Peacock Lane,  
Leicester, LE1 5PZ



**LEICESTER  
COMEDY  
FESTIVAL**

